

Gala 2023 Costumes

Please contact your chorister's conductor for any costume questions.

Uniform Notes for all Choirs

- Clothing:
 - Must meet PCC dress standards (Neckline, proper length, etc.)
 - Shirts should be loose fitting and cover midsection when arms are raised
 - No sheer/see through fabrics
 - Rips in pants must be below fingertips (with arms at sides) or patch/shorts must be worn
- Hair
 - Secured back, away from face, off the neck
 - Rock styles such as teased up, mohawk, etc. are okay
- Makeup
 - Bold colors are acceptable however choristers face should clearly be seen
 - Avoid makeup that covers portion or all of face (i.e. KISS makeup)

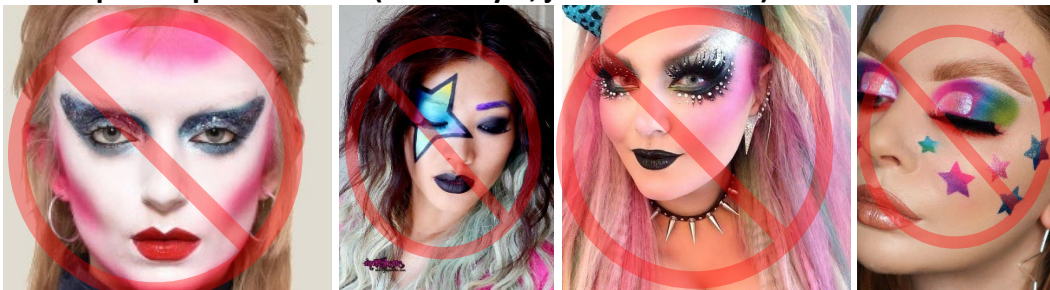
Approved Hair Examples



Approved Makeup Examples



Makeup Examples to Avoid (Great Style, just not for Gala)



Gala 2023 Costumes

Please contact your chorister's conductor for any costume questions.

Presto & Canto

PCC Provided Accessories:

- Fake Tattoo Sleeves (Presto)
- Bandanas (Presto)

Chorister Provided Costume:

- Plain black shirt with short sleeves (No writing or images)
 - [Example 1](#), [Example 2](#), [Example 3](#)
- Black Jeans/Pants – styled rips/tears/wear acceptable (no leggings)
 - [Example 1](#), [Example 2](#), [Example 3](#), [Example 4](#), [Example 5](#)
- Shoes – closed toe sneakers
- Accessories - Feel free to add fun, rocker-style belts, bracelets, etc. (optional)
 - [Example 1](#), [Example 2](#), [Example 3](#)



Gala 2023 Costumes

Please contact your chorister's conductor for any costume questions.

Bravo

PCC Provided Accessories:

- Bandanas (Presto)

Chorister Provided Costume:

- Aerosmith shirt (Purchased from PCC)
- Blue Jeans – styled rips/tears/wear acceptable
 - Rips in pants must be below fingertips (with arms at sides) or patch/shorts must be worn
- Shoes – closed toe sneakers
- Accessories - Feel free to add fun, rocker-style belts, bracelets, etc. (optional)
 - [Example 1](#), [Example 2](#), [Example 3](#)



Gala 2023 Costumes

Please contact your chorister's conductor for any costume questions.

Cadenza & Encore

Chorister Provided Costume:

- Plain black or rock band shirt with short sleeves, worn untucked
- Blue Jeans – styled rips/tears/wear acceptable
 - Rips in pants must be below fingertips (with arms at sides) or patch/shorts must be worn
- Shoes – closed toe sneakers
- Accessories - Feel free to add fun, rocker-style belts, bracelets, etc. (optional)
 - [Example 1](#), [Example 2](#), [Example 3](#)

